

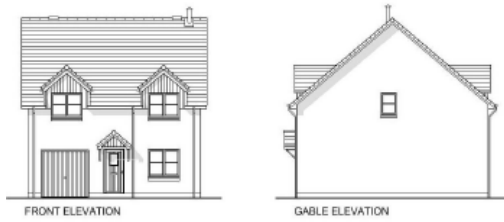
AGENDA ITEM 7

APPENDIX 1a

2013/0120/DET

**PROPOSED HOUSE TYPES
CARR ROAD SITE**

Appendix I (a) Proposed House Types Carr Road Site

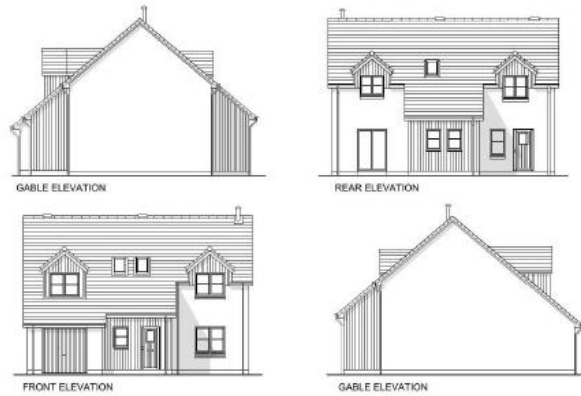


Arran – four bedroom one and a half storey detached house with integral garage



Avon – four bedroom one and half storey detached house with integral side garage wing

CAIRNGORMS NATIONAL PARK AUTHORITY
Planning Committee Agenda Item 7 Appendix 1a 13/03/2015



Cairngorm – three bedroom one and a half storey detached house with integral garage and rear porch feature.

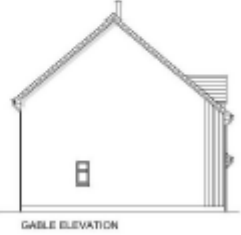
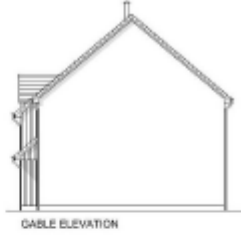


Cedar – semi detached three bedroom single storey house.



Conival – three bedroom single storey L shaped detached house with integral garage.

CAIRNGORMS NATIONAL PARK AUTHORITY
Planning Committee Agenda Item 7 Appendix 1a 13/03/2015



- **Harris** – three bedroom one and half storey detached house with integral garage and front porch detail

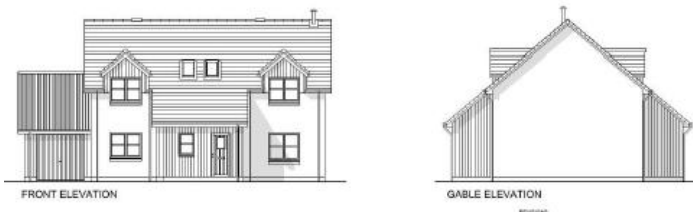
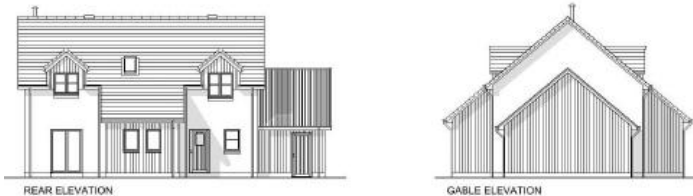


- **Kildonan** – semi detached two bedroom one and a half storey house.

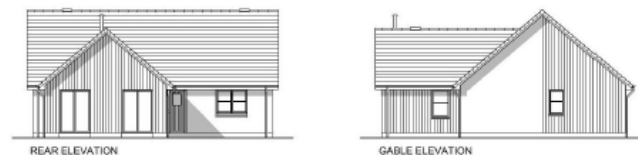
CAIRNGORMS NATIONAL PARK AUTHORITY
Planning Committee Agenda Item 7 Appendix 1a 13/03/2015



- **Kilmory** – semi detached three bedroom one and a half storey house (Another Kilmory house type is also proposed with side car port feature)



- **Macdui** – four bedroom one and a half storey house with integral garage side wing feature



- **Unnamed** three bedroom single story detached L shaped house